

SMED tool™

Are you looking to dramatically improve your changeovers?

- Have you ever run a post-it note session and by the time you've practiced your procedure all your post-it notes have fallen off the wall?
- Have you ever run a SMED group, come up with some great ideas during the session and then lost clarity on follow up?
- How frustrating is it to create your new procedure and then have to manually write up work instructions?



The Optimumfx SMED tool will help you to:

- Create and store multiple procedures to share with your teams.
- Print detailed operator work instructions or summary team work instructions.
- Create 1 procedure and model for teams of 1,2,3-10 people to assess the benefit of up-manning on changeovers.
- Simple reports help you to easily track the actions needed to further improve your process.
- Every stage comes with training notes developed from our experiences implementing SMED across UK manufacturing sites.

With the SMED Tool you can create and store multiple procedures to be shared amongst your teams

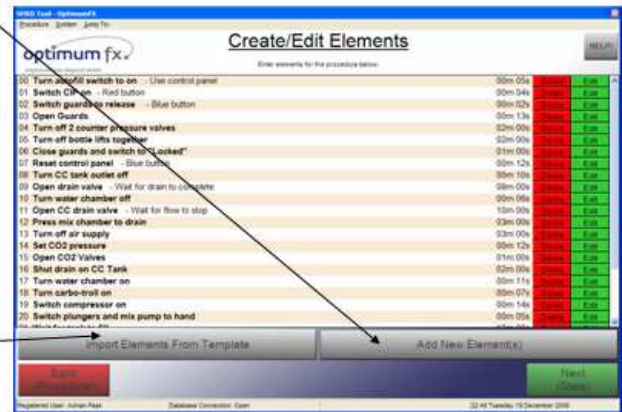
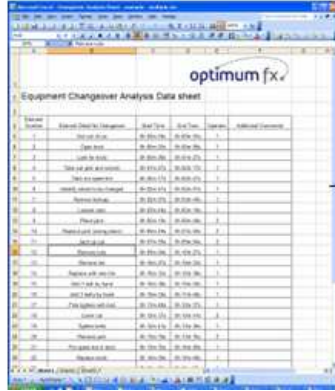
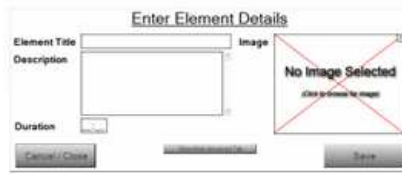
Optimum fx Limited
T: +44 (0) 121 447 8520
E: results@optimumfx.com

www.optimumfx.com

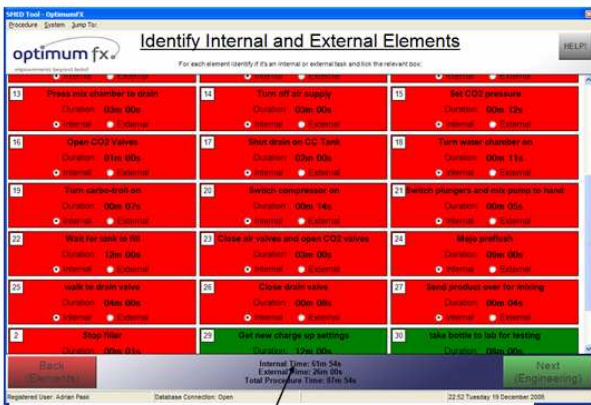
Step 1

Simple intuitive method of entering the elements using either an excel spreadsheet or our built-in editor.

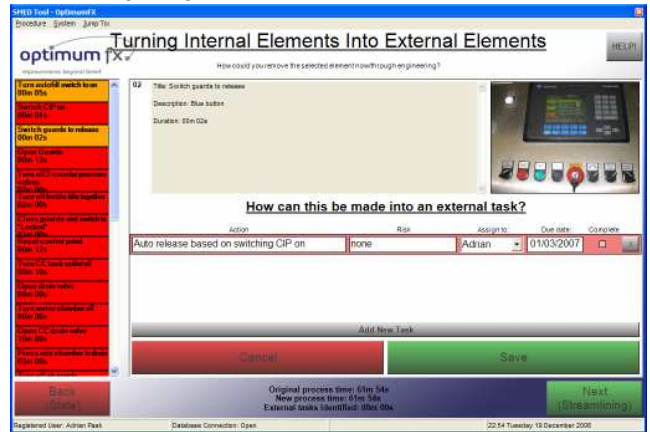
You can even add pictures for each element



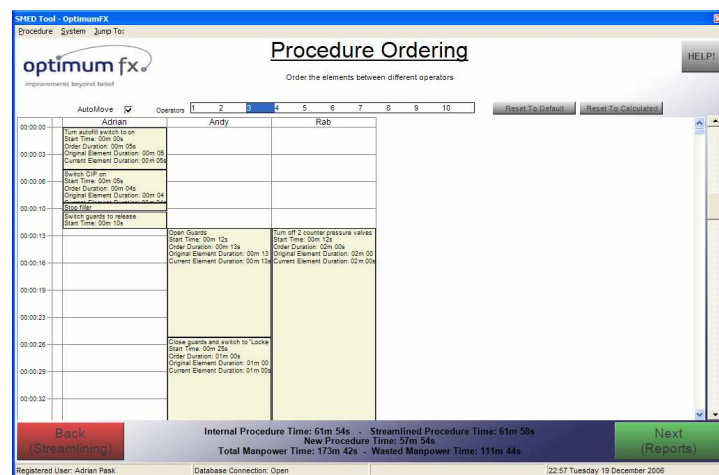
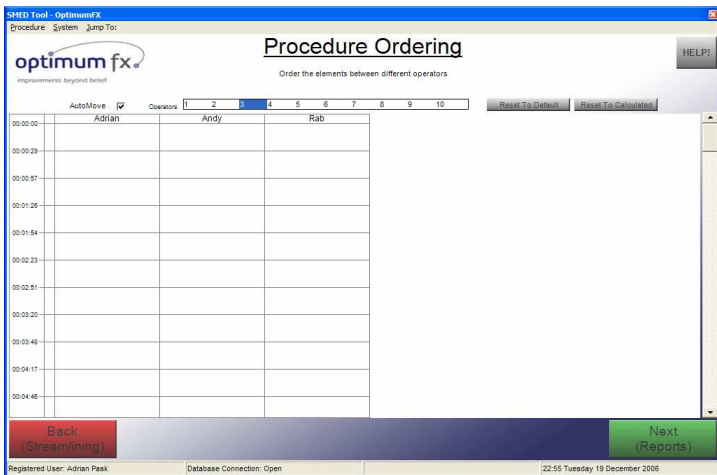
Step 2: Follow the tool through the SMED process to identify internal and external elements and assign tasks for follow up by the team later



System calculates new procedure time as you progress



Step 3: Use our unique "drag and drop" system to plan procedures for teams of up to 10 people. Store all your procedures to model the difference that crewing makes to your changeover time







A really simple process which guides you through the SMED process to deliver real results

Optimum fx Limited
T: +44 (0) 121 447 8520
E: results@optimumfx.com

www.optimumfx.com

Step 4: Print detailed instructions for operator training including pictures, or print a team overview for pre-procedure briefing. All your procedures are saved in the database and can be retrieved and printed at any time.

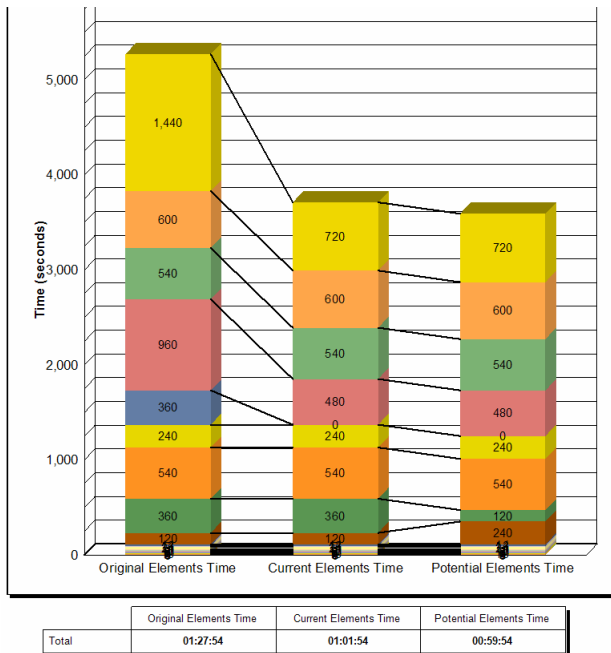
Title	Rinse and Charge	Description	Sample SMED process on a bottling line
Start Time 00:00:12	Title Open Guards		
Duration 00:00:13	Description		
Finish Time 00:00:25			
Start Time 00:00:25	Title Close guards and switch to "Locked"		
Duration 00:01:00	Description		
Finish Time 00:01:25			
Start Time 00:01:37	Title Turn CC tank outlet off		
Duration 00:00:10	Description		
Finish Time 00:01:47			
Start Time 00:01:47	Title Open CC drain valve		
Duration 00:10:00	Description Wait for flow to stop		
Finish Time 00:11:47			

Total Page No.: 6 Zoom Factor: 100%

Procedure Instructions Overview			
(3 Operators)			
Procedure ID	Line	Adrian Pask	Reference
6330216402393			CW R&C1
Title	Description	Sample SMED process on a bottling line	
Background Tasks	Adrian	Andy	Rab
00:00:00	"ELEMENT START" Turn autofill switch to on		
00:00:05	"ELEMENT END" (00:00:05)		
00:00:05	"ELEMENT START" Switch CIP on		
00:00:09	"ELEMENT END" (00:00:04)		
00:00:09	"ELEMENT START" Stop filler		
00:00:10	"ELEMENT END" (00:00:01)		
00:00:10	"ELEMENT START" Switch guards to release		
00:00:12	"ELEMENT END" (00:00:02)		
00:00:25		"ELEMENT START" Open Guards	"ELEMENT START" Turn off 2 counter pressure valves
00:00:25		"ELEMENT END" (00:00:13)	"ELEMENT END" (00:00:13)
00:00:25		"ELEMENT START" Close guards and switch to "Locked"	
00:00:25		"ELEMENT END" (00:01:00)	
00:00:37	"ELEMENT START" Reset control panel		
00:00:37	"ELEMENT END" (00:00:12)		
00:00:47		"ELEMENT START" Turn CC tank outlet off	
00:00:47		"ELEMENT END" (00:00:10)	
00:00:47		"ELEMENT START" Open CC drain valve	"ELEMENT START" Open CC drain valve
00:00:47		"ELEMENT END" (00:00:10)	"ELEMENT END" (00:00:10)

Page No.: 1 Total Page No.: 7

Step 5: The whole team can view the actions needed to further improve changeover times and the potential impact these actions will have on your changeover time.



External Tasks

Procedure ID 6330216402393 **Line** Adrian Pask **Reference** CW R&C1
Title Rinse and Charge **Description** Sample SMED process on a bottling line

Title	Description	Time
Get new charge up settings		00:12:00
take bottle to lab for testing		00:08:00
find tools in store room		00:06:00

No more lost post-it notes – the SMED tool includes a full range of procedure printouts and follow up action tasks